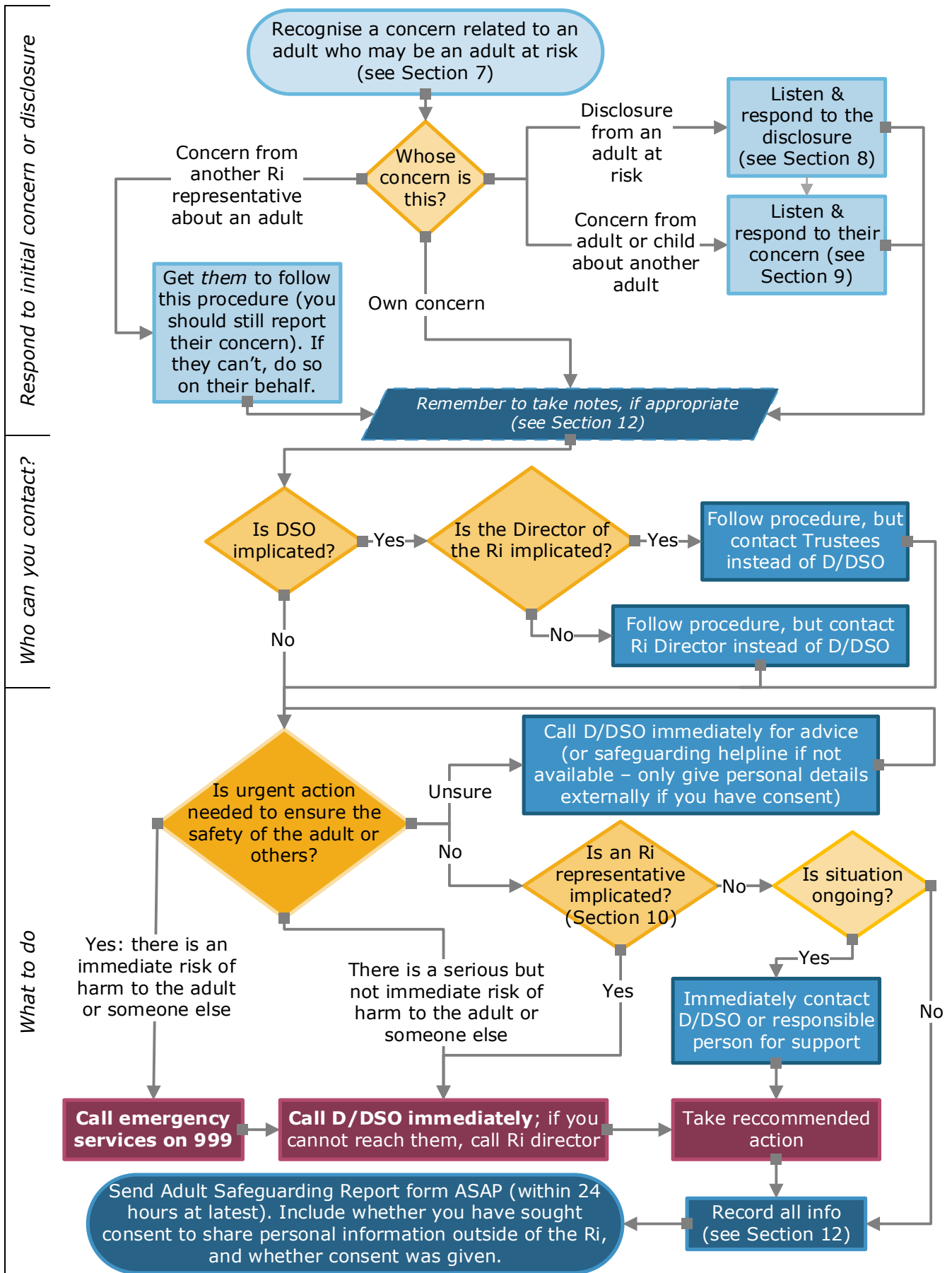


SAFEGUARDING FLOWCHART 2: What to do when you have a concern about an adult



For more details on who to contact (including up-to-date contact details), and information on recognising, responding to, reporting and recording safeguarding concerns, please see the Safeguarding pages on the Ri website (<https://www.rigb.org/about-us/safeguarding>) and the Ri's Safeguarding Procedures (Section 2 and Sections 6-12).